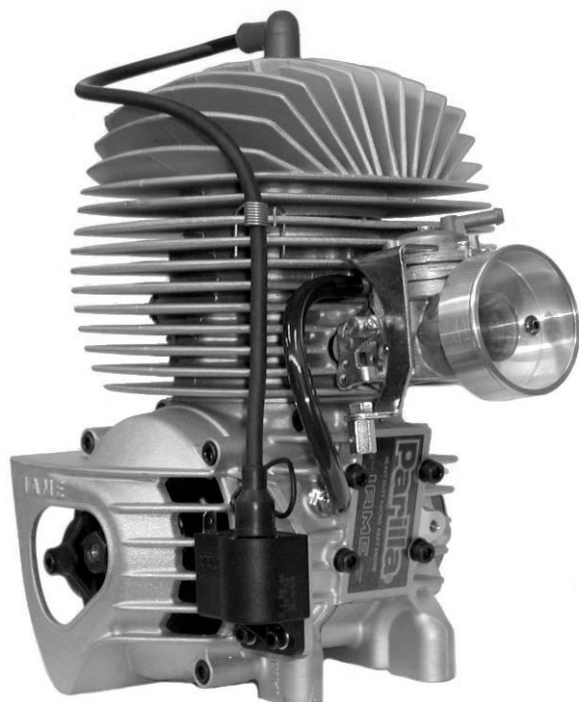
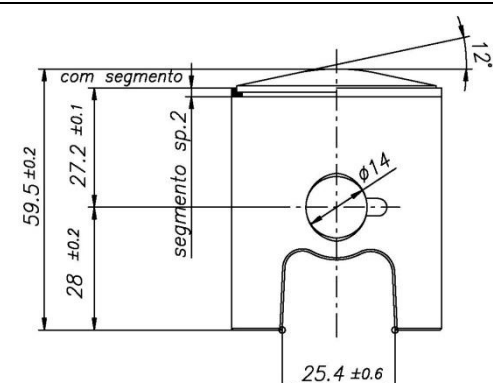
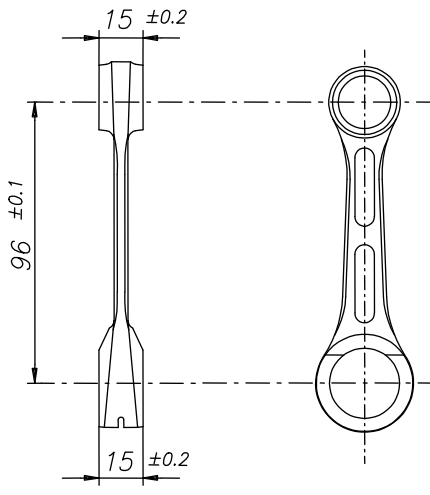


Parilla PUMA 85cc-TaG – Cadete-Portugal

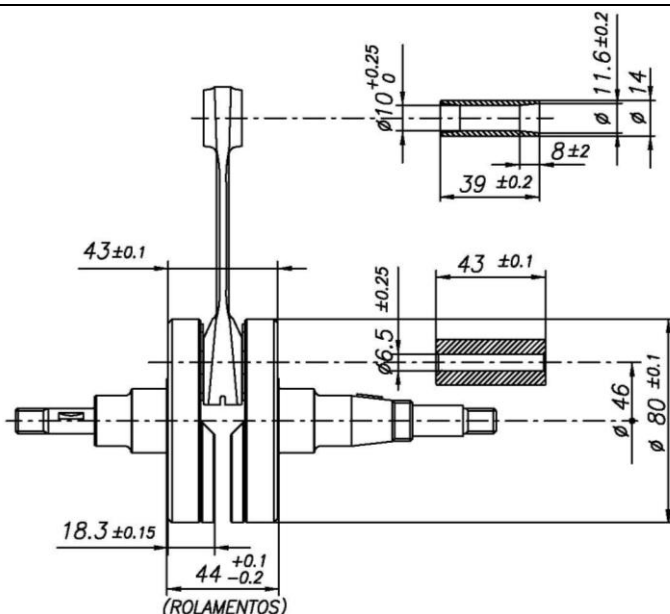


CARACTERÍSTICAS TÉCNICAS

		CARACTERÍSTICAS TÉCNICAS	
		Volumen cilindro de origem	83.93 cm ³
		Diâmetro cilindro de origem	48.20 mm
		Diâmetro máximo do cilindro	48.50 mm
		Curso	46 mm
		Sistema de refrigeração	Ar
		Sistema de admissão	Porta Pistão
		Nº de carburadores	1
Carburador TILLOTSON HL	352 A	Nº de transferes cilindro / cárter	2
Nº segmentos do pistão	1	Nº janelas de admissão / escape	1 / 1
Dimensões do rolamento de agulhas CABEÇA - BIELA	18x24x15	Forma da câmara de combustão	Esférica
Dimensões Rolamentos de Esferas da cambota	25x52x15	Ignição Selettra Nº homologación 36/A/09	2 polos
Dimensões do rolamento de agulhas PÉ - BIELA	14x18x17.5	Biela – Distância entre eixos	96 mm

DESCRIÇÃO MATERIAIS		PISTÃO
Material da biela	Aço	 <p>Peso mínimo com segmento= 100g</p>
Material cambota do motor	Aço	
Material da culaça	Alumínio	
Material do cilindro	Alumínio	
Material da camisa	Ferro Fundido	BIELA
Material do cárter	Alumínio	 <p>Peso mín. 95g</p>
Material do pistão	Alumínio	
Material do segmento pistão	Ferro Fundido	
Material do escape	Aço	
Rolamentos do cárter	Tipo 6205-C4	

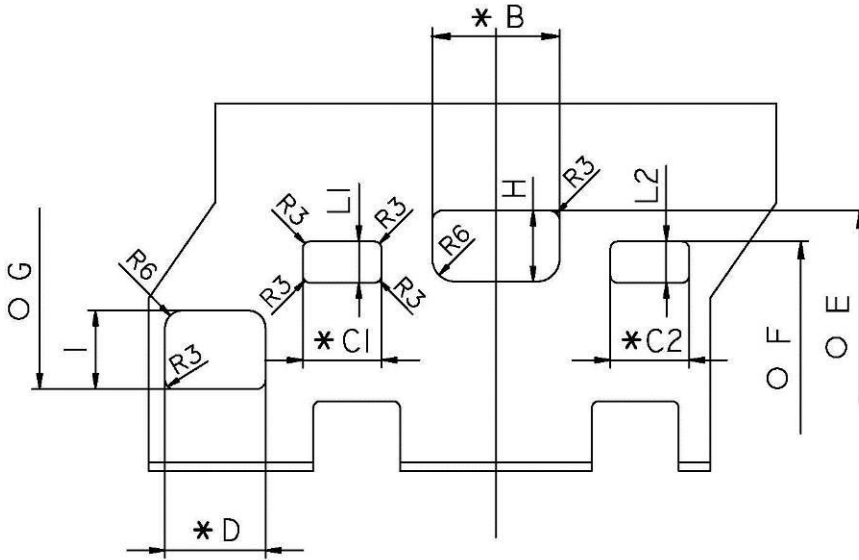
CAMBOTA DO MOTOR



Peso mín. do cavilhão 20g

Peso mín. da cambota completa 1530g

DESENHO PLANIFICADO DO CILINDRO

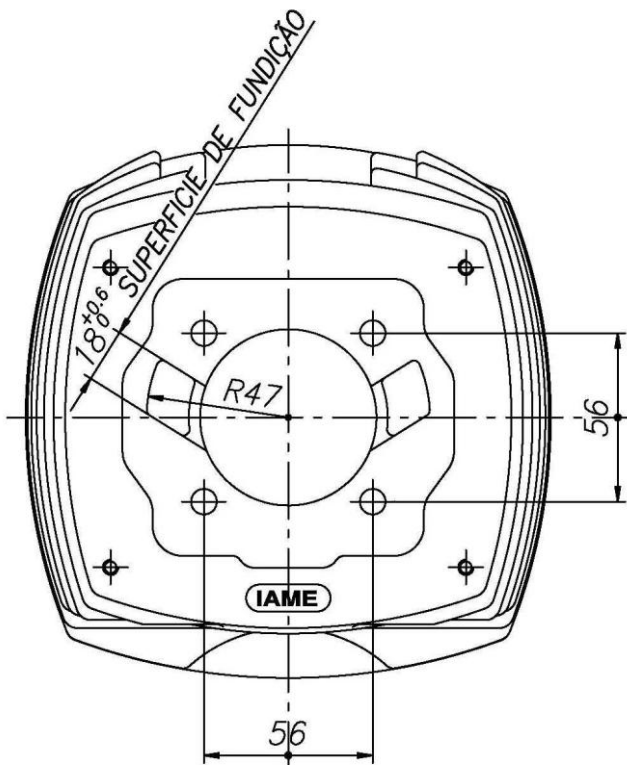


B	≤ 29 mm
C1 = C2	≤ 19.5 mm
D	≤ 33.5 mm
E	164° max
F	125.5° ±1.5°
G	156° max
H	17.2 ±0.3mm
I	19.3 ±0.3mm
L1 = L2	10.5 ±0.3mm

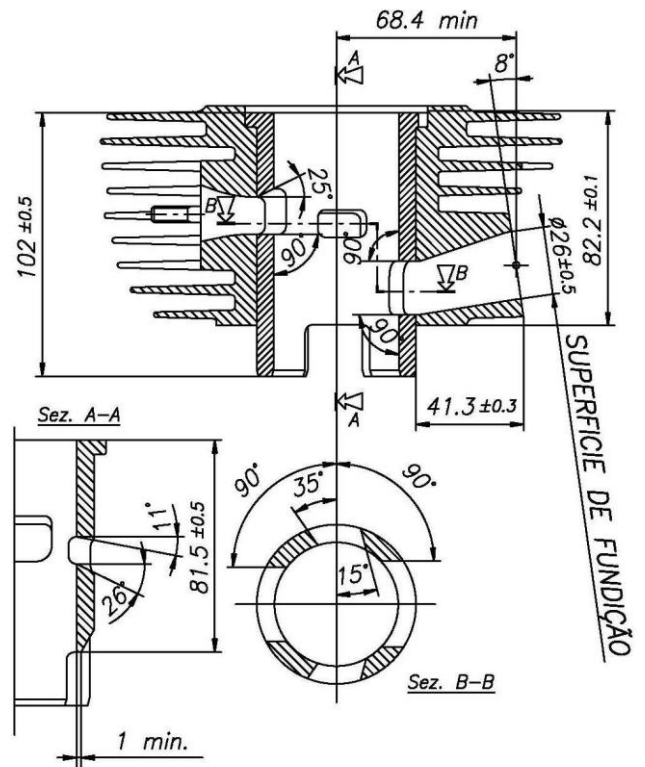
↳ LEITURA CORDAL

○ LEITURA ANGULAR COM LAMINA (APALPA FOLGAS) DE 0.2x5 mm

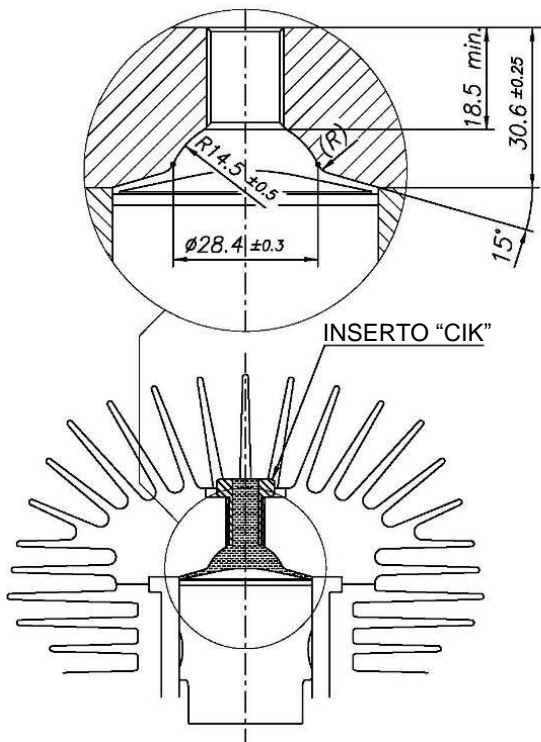
VISTA BASE DO CILINDRO



SECÇÃO DO CILINDRO



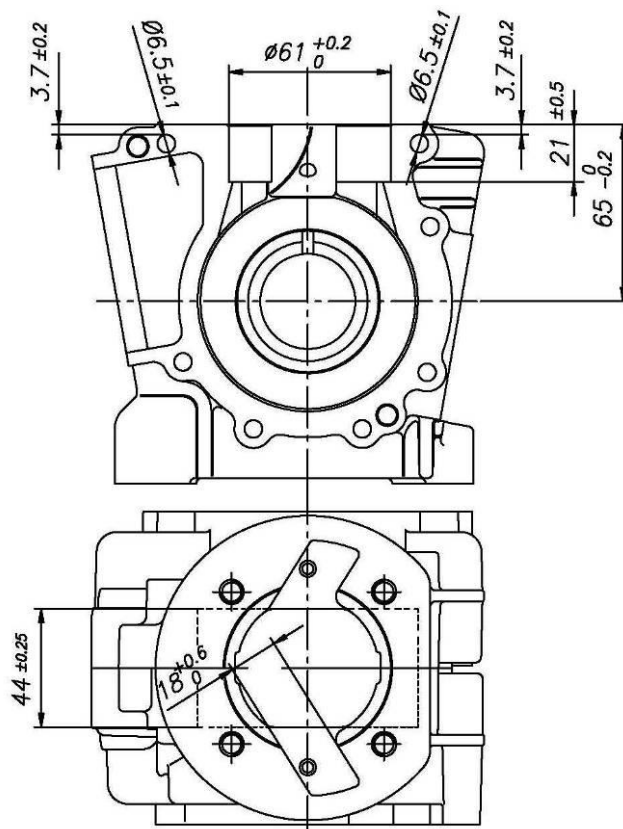
CÂMARA DE COMBUSTÃO



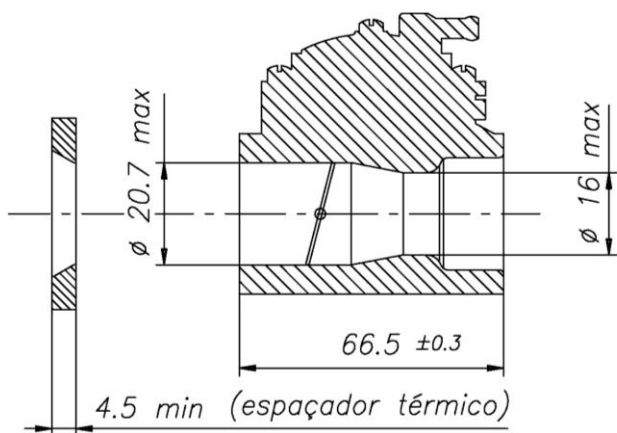
INSERTO "CIK"

VOLUME MÍNIMO DA CÂMARA DE COMB.= 8.2 cm³ mín.
(COM O INSERTO "CIK" 6.2 + 2 cm³)

VISTA DO CÂRTER

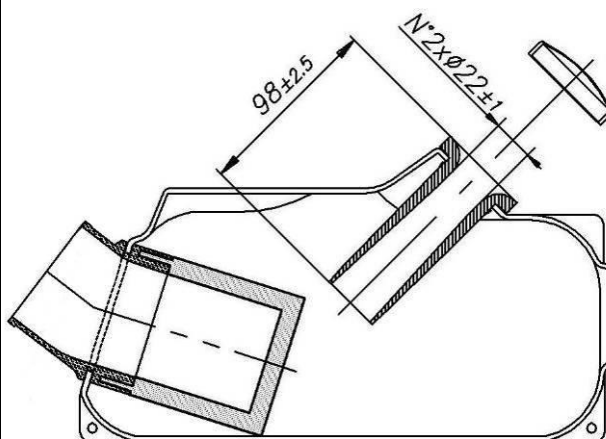


DIMENSÕES DO VENTURI DO CARBURADOR

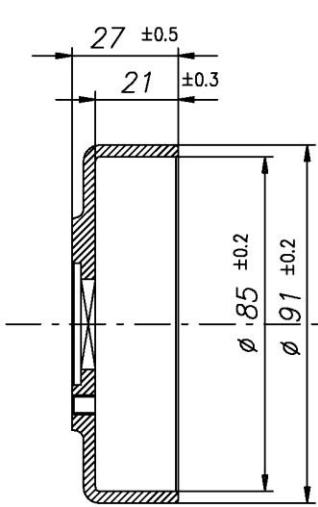
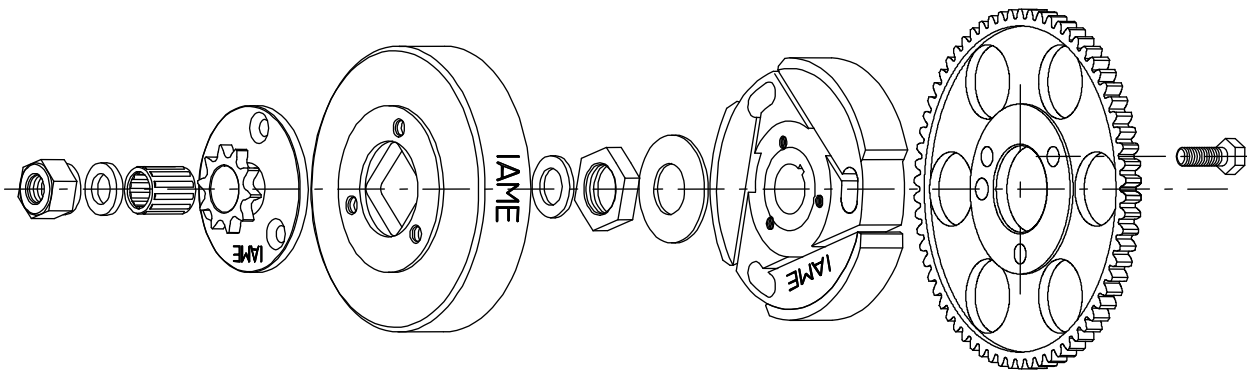


SÓ TILLOTSON mod. HL-352 A

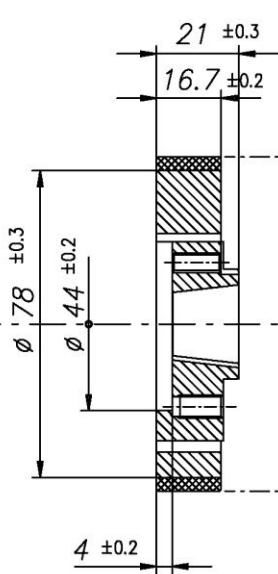
FILTRO DE AR



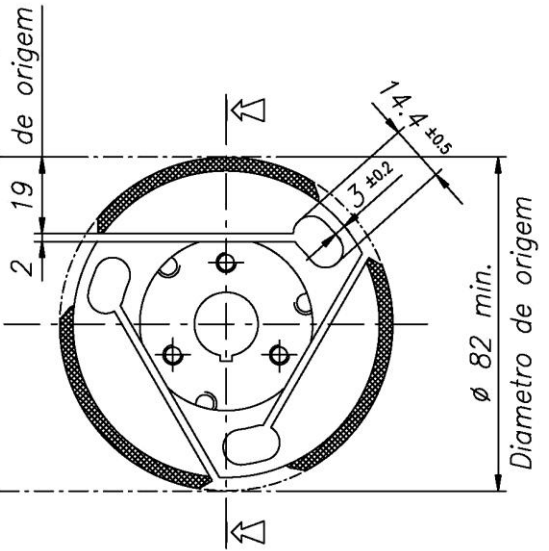
COMPONENTES DO GRUPO DA EMBRAIAGEM



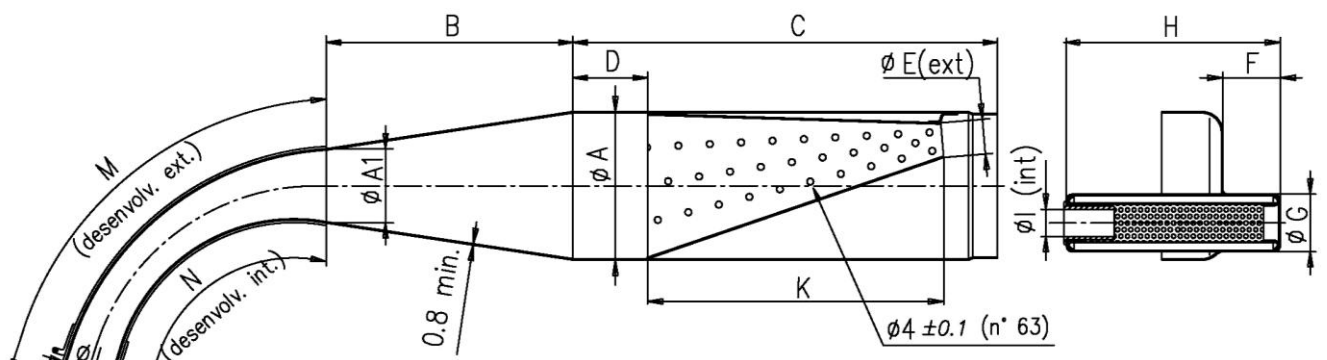
Peso mín. 295 g



Peso mín. 465 g



DIMENSÕES DO TUBO DE ESCAPE



A: $\frac{90 \pm 1.5}{}$	C: $\frac{260 \pm 3}{}$	F: $\frac{35 \pm 2}{}$	I: $\frac{17 \text{ max.}}{}$	M: $\frac{240 \pm 3}{}$
A1: $\frac{45 \pm 1}{}$	D: $\frac{47 \pm 5}{}$	G: $\frac{35 \pm 1}{}$	K: $\frac{181 \pm 3}{}$	N: $\frac{190 \pm 3}{}$
B: $\frac{150 \pm 3}{}$	E: $\frac{20 \pm 1}{}$	H: $\frac{132 \pm 2}{}$	L: $\frac{31 \pm 1.5}{}$	

FOTO IDENTIFICAÇÃO CULAÇA

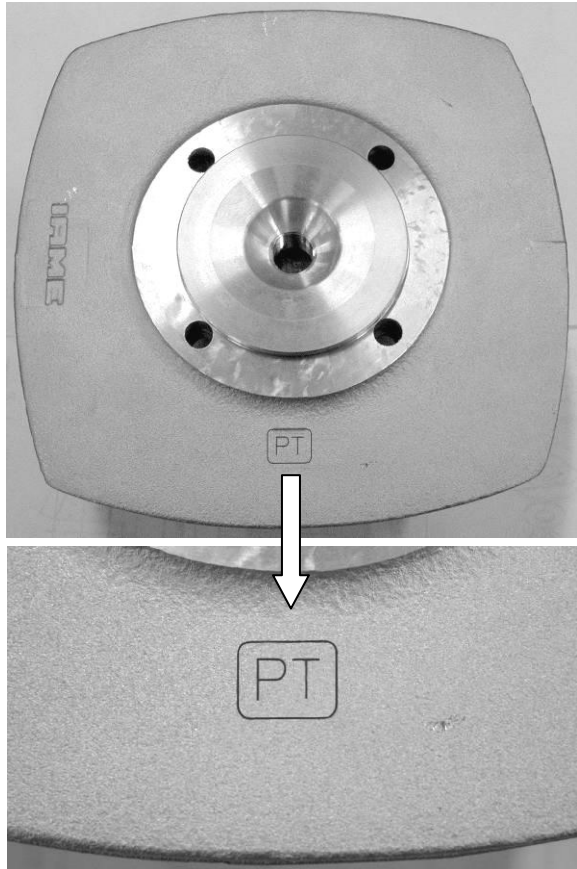


FOTO IDENTIFICAÇÃO CILINDRO

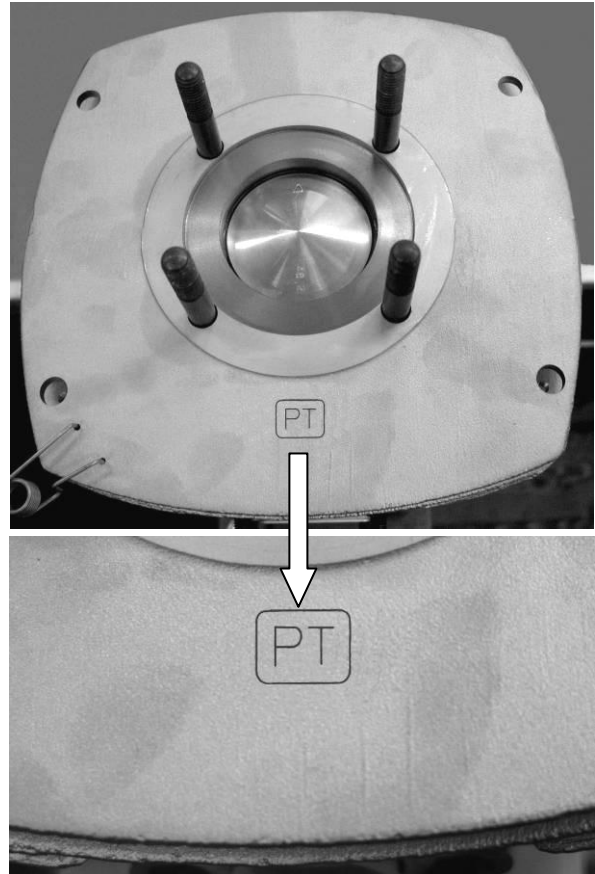


FOTO IDENTIFICAÇÃO DO CÂRTER

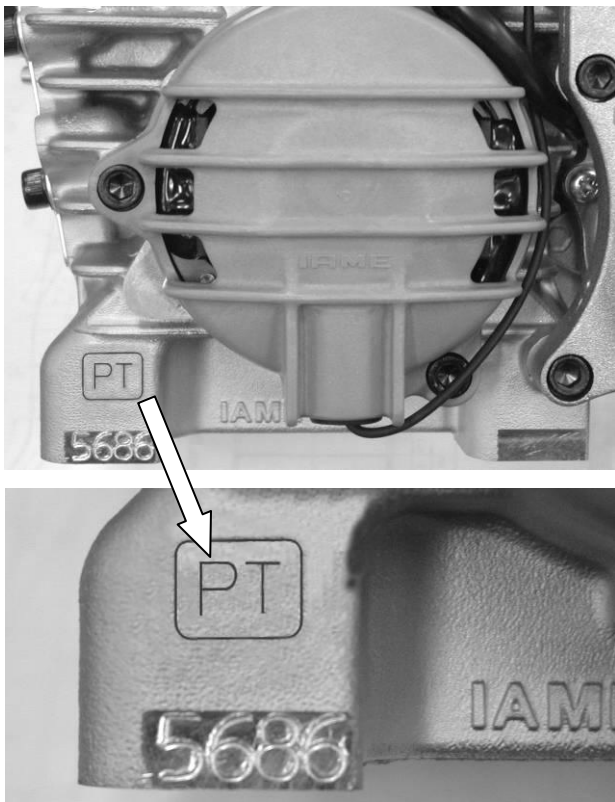


FOTO IDENTIFICAÇÃO TUBO DE ESCAPE



FOTO IDENTIFICAÇÃO CONTRAPESOS CAMBOTA

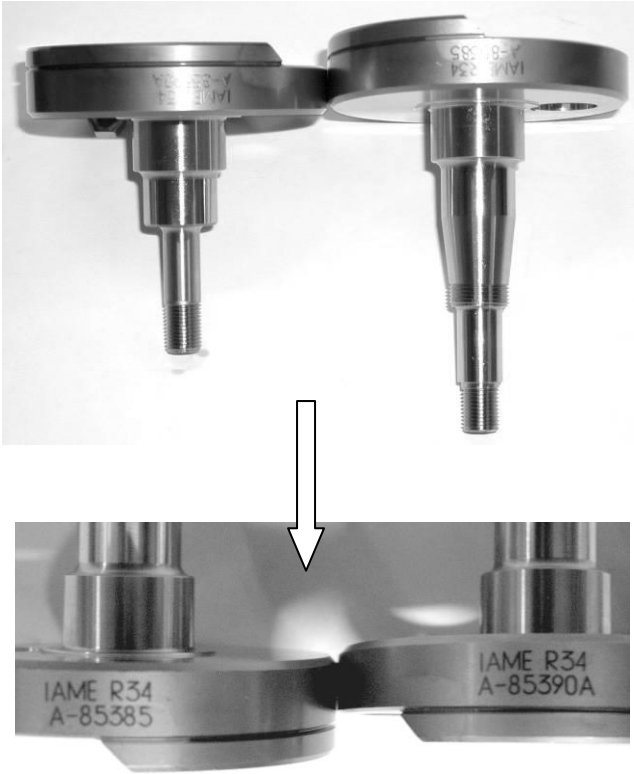


FOTO IDENTIFICAÇÃO BIELA E PISTÃO

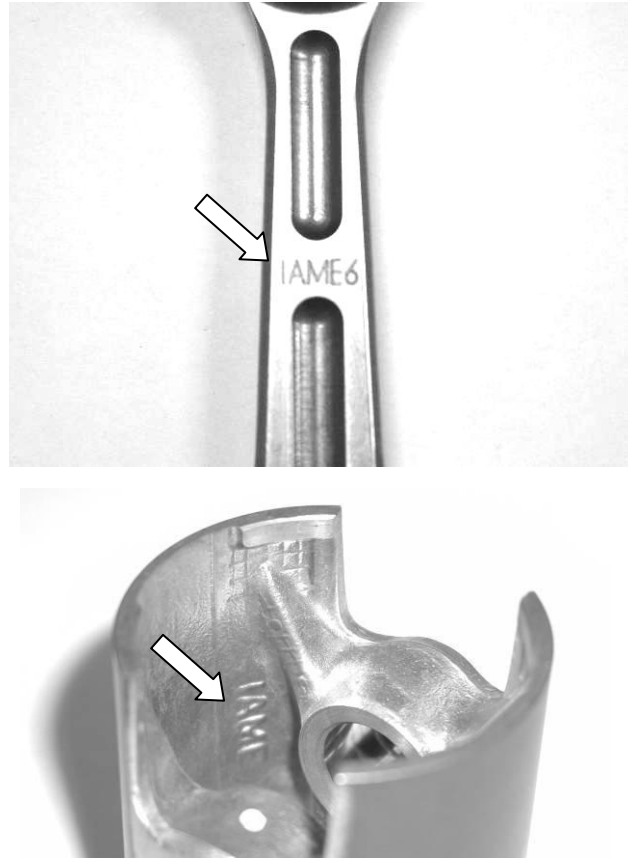


FOTO IDENTIFICAÇÃO DISCO EMBRAIAGEM

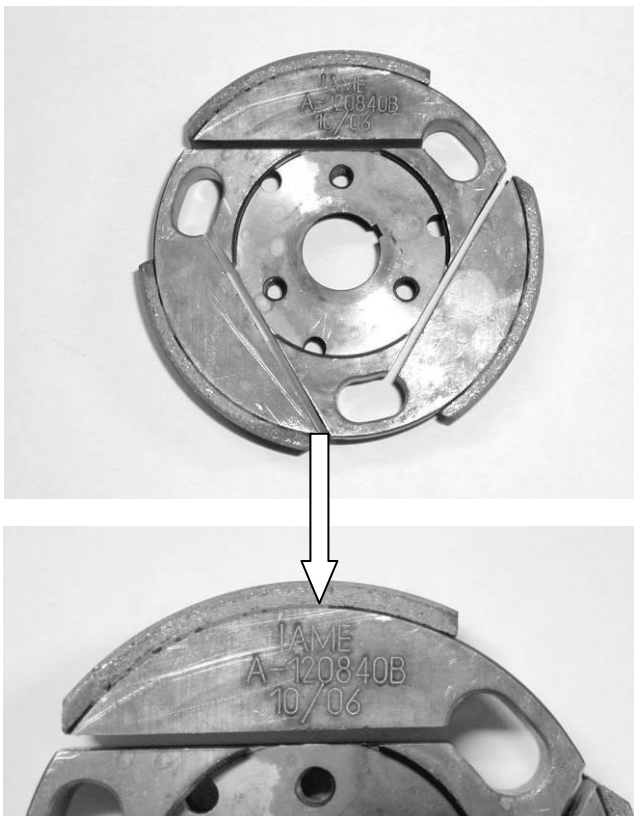
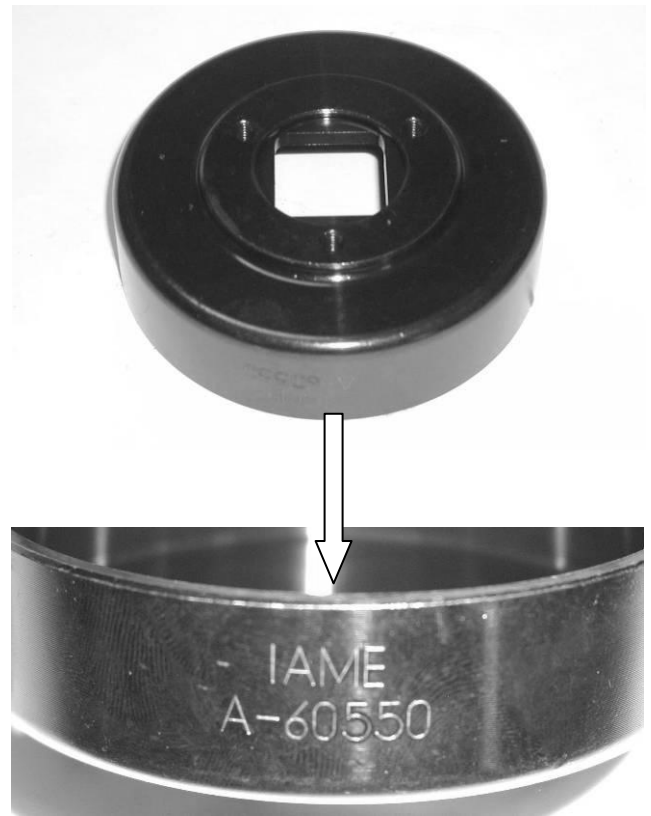
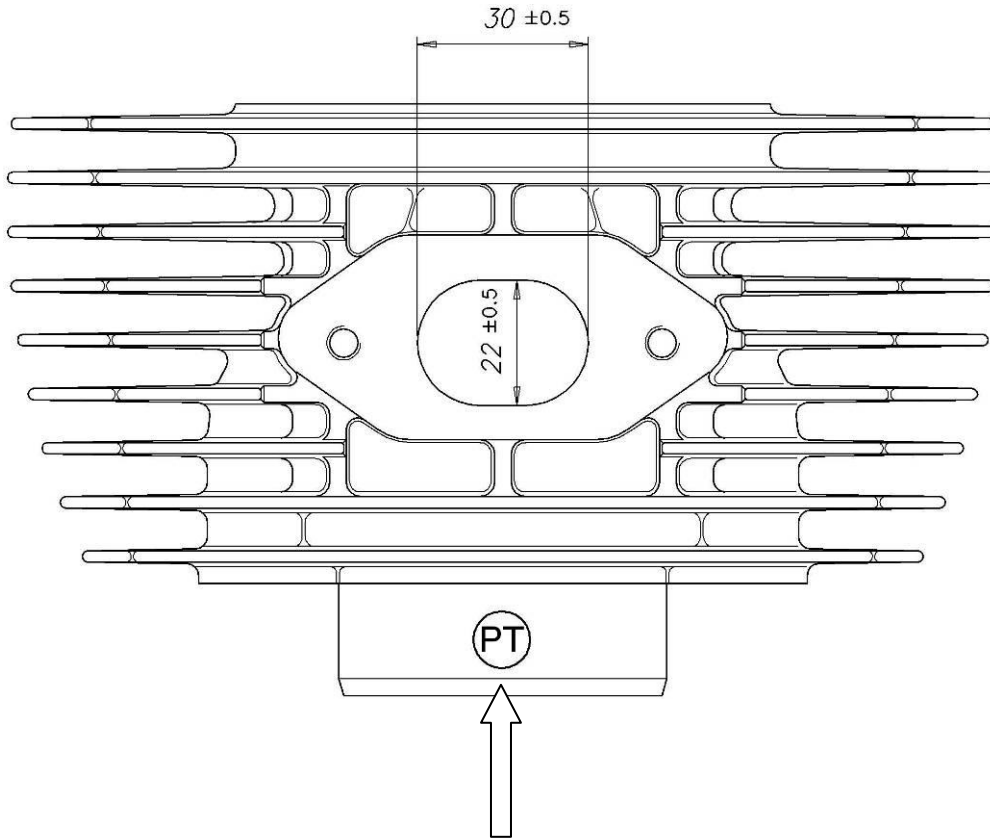


FOTO IDENTIFICAÇÃO CAMPÂNULA EMBRAIAGEM



IDENTIFICAÇÃO CAMISA CILINDRO



MEDIDAS COLECTOR ESCAPE

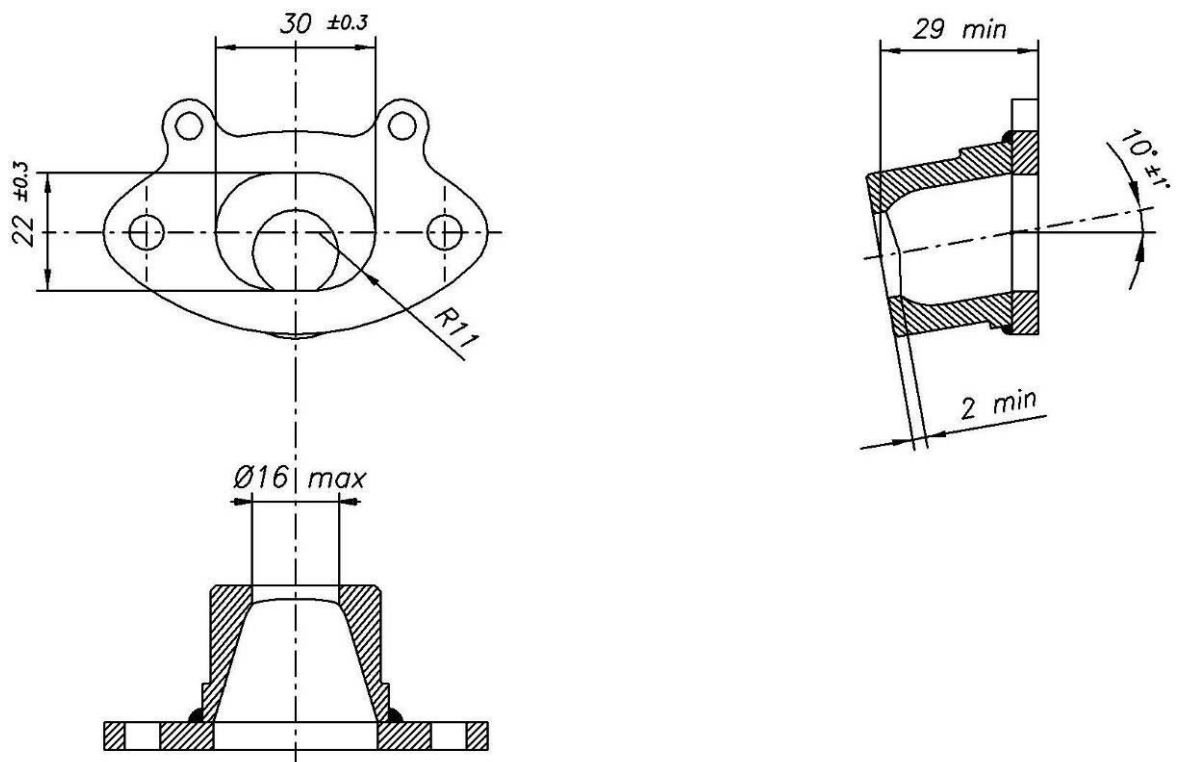


FOTO IDENTIFICATIVA DO FILTRO DE AR



BATENTE DA BORBOLETA – OPÇÃO 1 (TILLOTSON mod. HL-352 A)

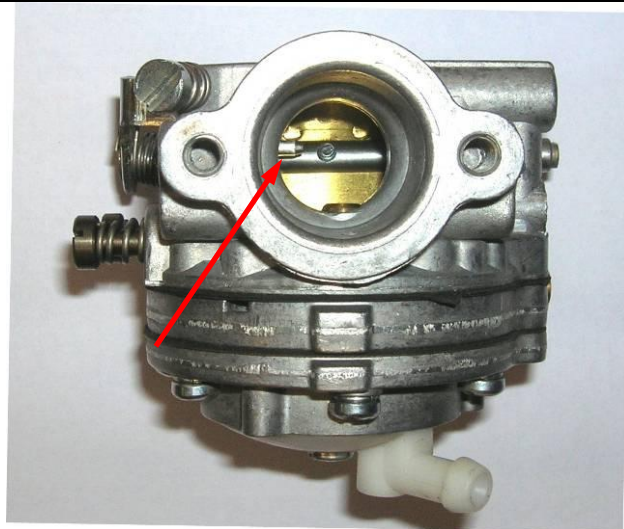


Borboleta Fechada



Borboleta aberta

BATENTE DA BORBOLETA – OPÇÃO 2 (TILLOTSON mod. HL-352 A)



Borboleta Fechada



Borboleta aberta

FOTO DE IDENTIFICAÇÃO - IGNIÇÃO Selettra N°36/A/09 – 2 POLOS

